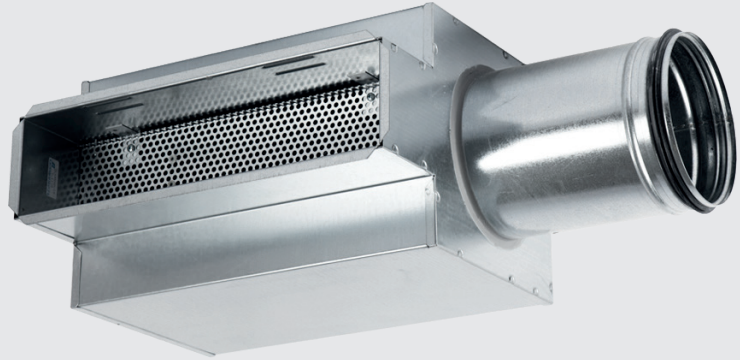


Commissioning plenum box
for supply air grilles

DLK



Application

DLK and DLK-N plenum boxes are recommended for DH, DR and AG air grilles.

DLK is equipped with insulation, an air deflector, commissioning damper with measuring tubes, and air-tight rubber sealing on the connection.

As standard versions the boxes are available either with side (S), back (B) or top (O) connection.

DLK-N is without insulation. It is available in the same sizes as DLK.

Standard sizes

Please see table T3.

Materials

Galvanized stainless steel, with glass wool insulation. Plastic pipe and probe for commissioning. (DLK-N is manufactured without insulation)

Main features

- for mounting and commissioning supply wall diffusers
- commissioning can be easily set due to the measuring tubes
- with noise absorbing insulation

Technical data

T.1. Correction DLK K_O [dB]

Type	Medium frequency [Hz]						
	63	125	250	500	1000	2000	4000
DLK	+12	+3	+2	0	-1	-7	-14

Tol. ± 3 dB

T.2. Sound attenuation DLK ΔL_O [dB]

Type	Medium frequency [Hz]						
	63	125	250	500	1000	2000	4000
200x100	20	16	12	12	9	11	13
300x100							
400x100							
500x100							
600x100	18	14	12	11	10	12	12
400x150							
500x150							
600x150	16	13	11	10	10	11	9
500x200							
600x200							

Tol. ± 3 dB

The soundlevel is applicable at an equivalent sound absorption area of 10 m².

Sound power level: L_W [dB]

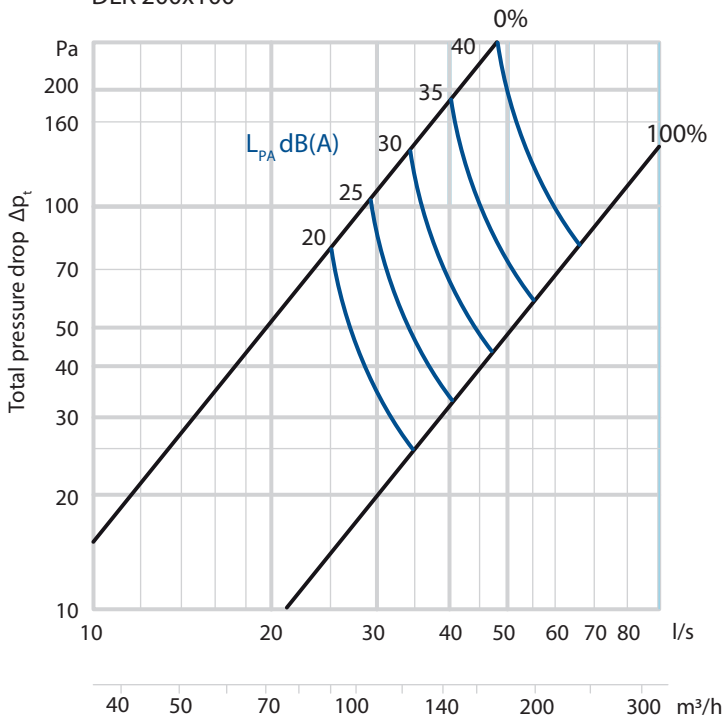
Sound pressure level: L_{PA} [dB(A)] (see diagram 1-10.)

Correction factor: K_O [dB] from table 1.

$$L_W = L_{PA} + K_O$$

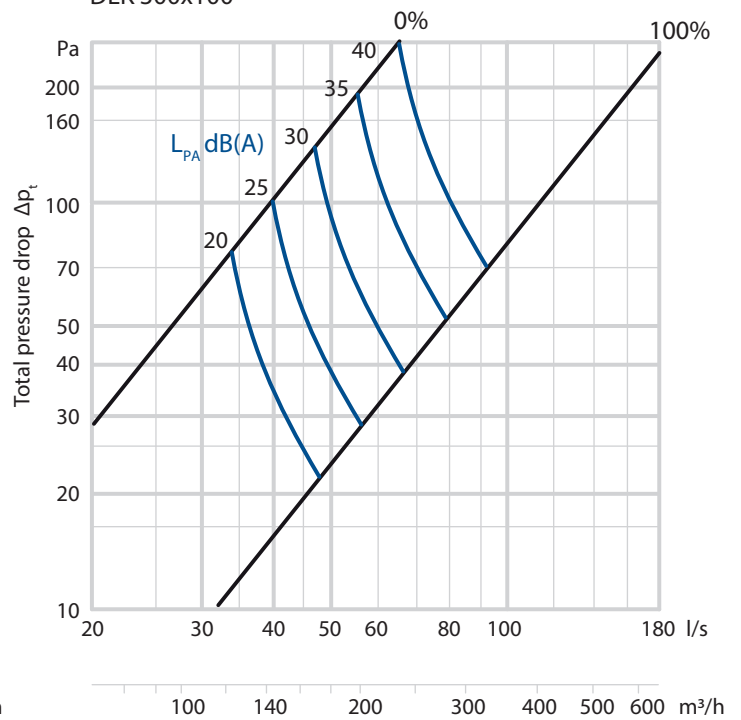
Diagram

D.1. DLK 200x100

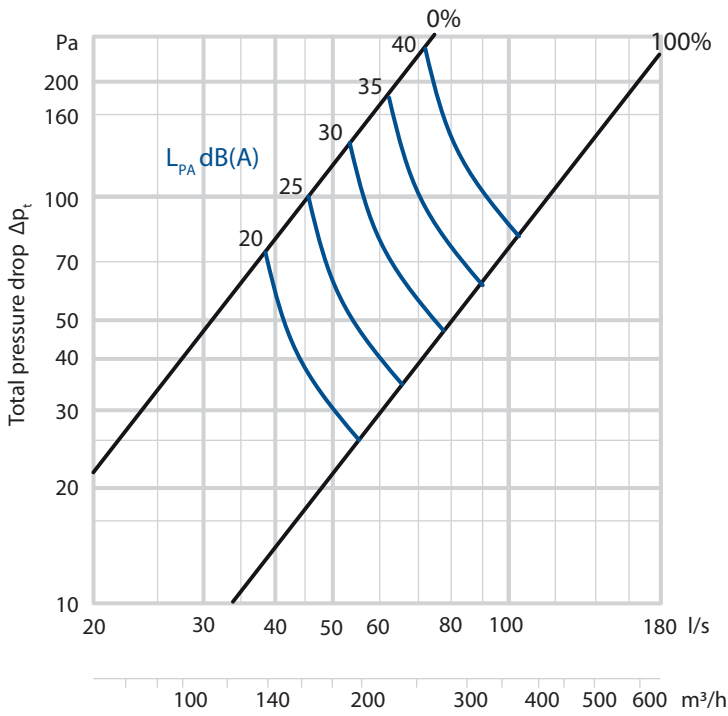


0% = Closed damper
100% = Opened damper

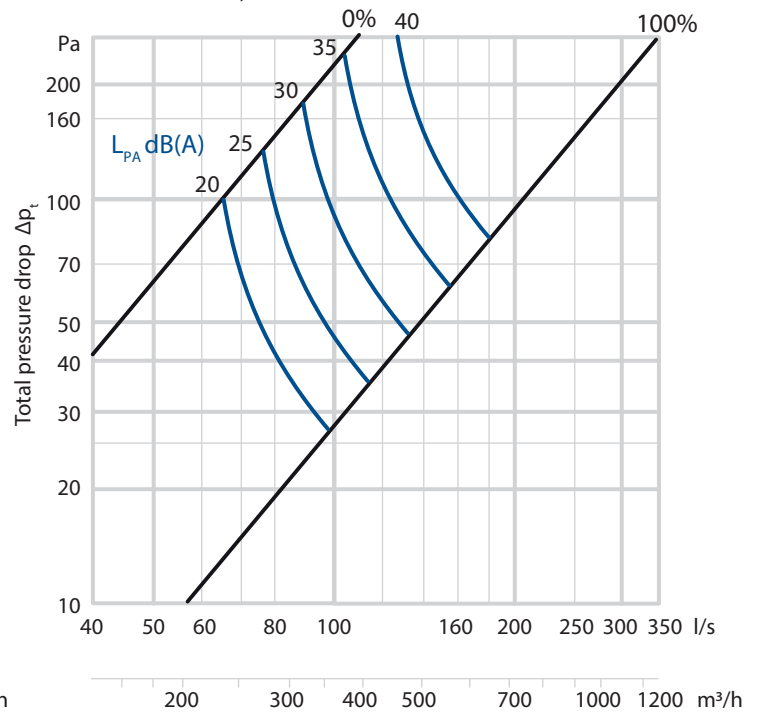
D.2. DLK 300x100



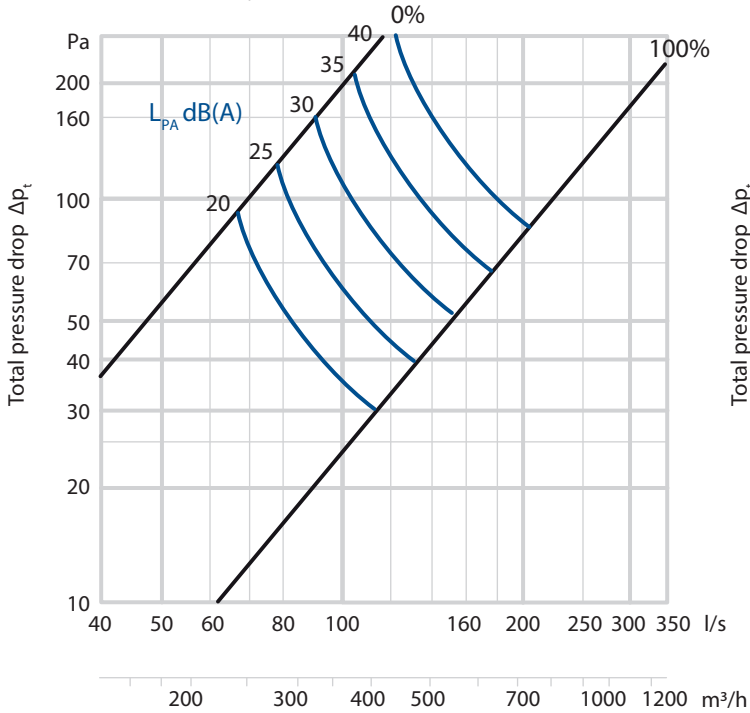
D.3.
DLK 400x100



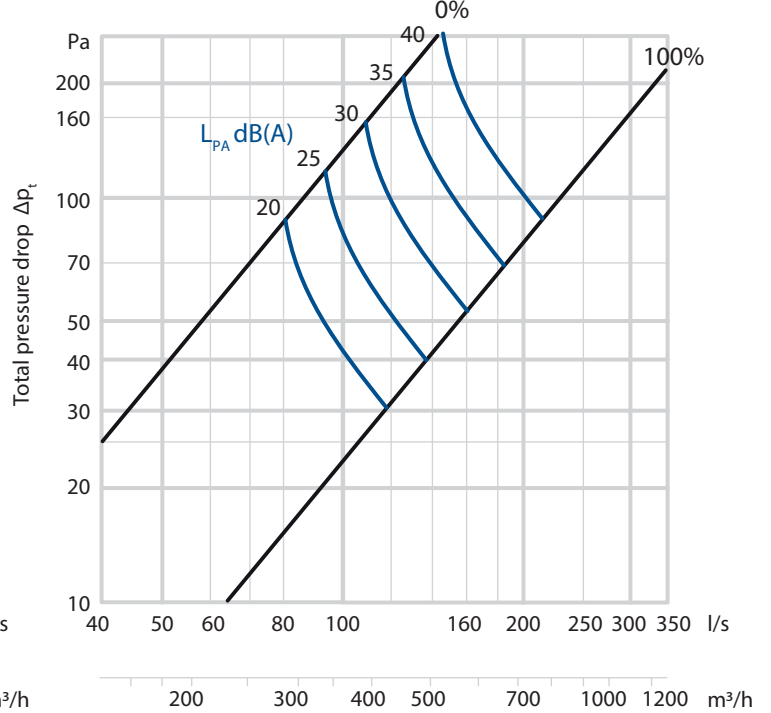
D.4.
DLK 500x100 ; DLK 300x150



D.5.
DLK 600x100 ; DLK 400x150

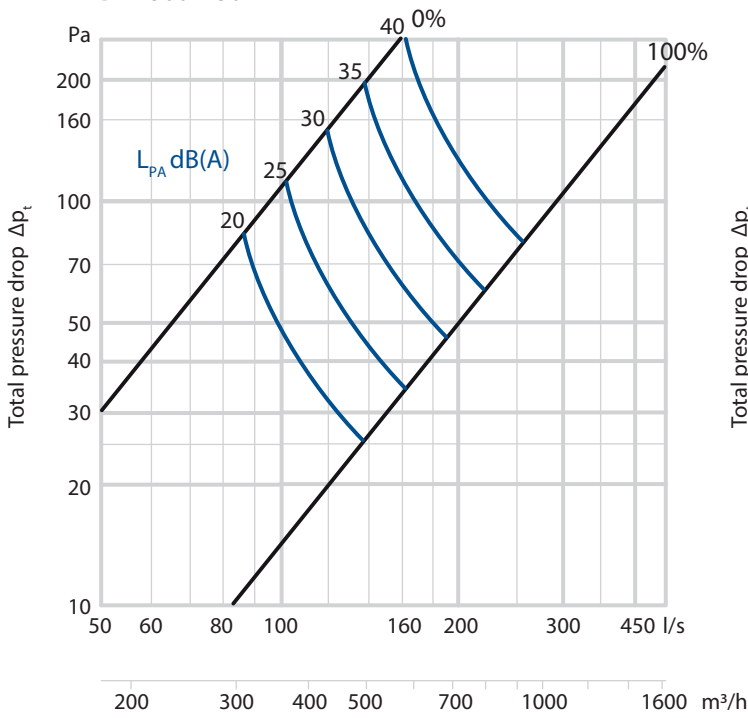


D.6.
DLK 400x200

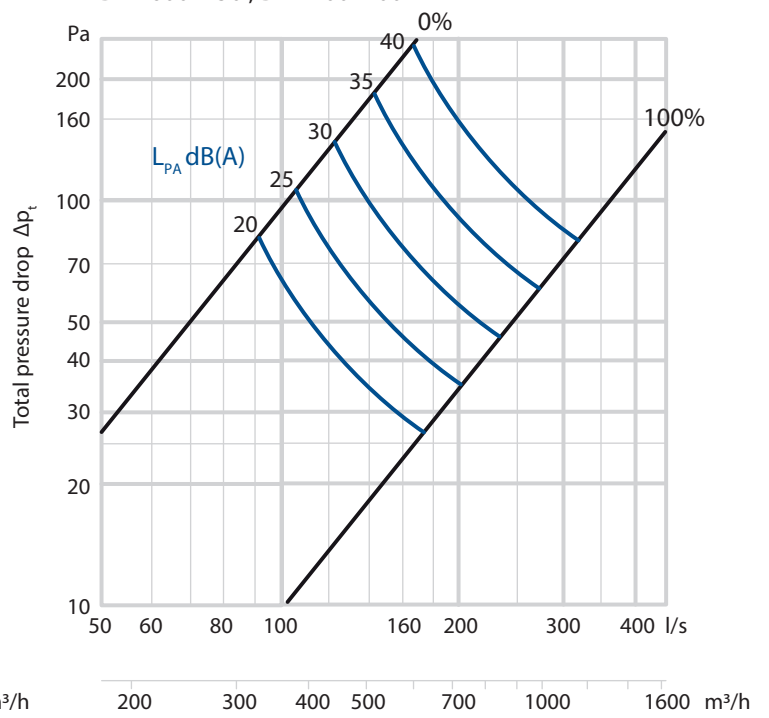


0% = Closed damper
100% = Opened damper

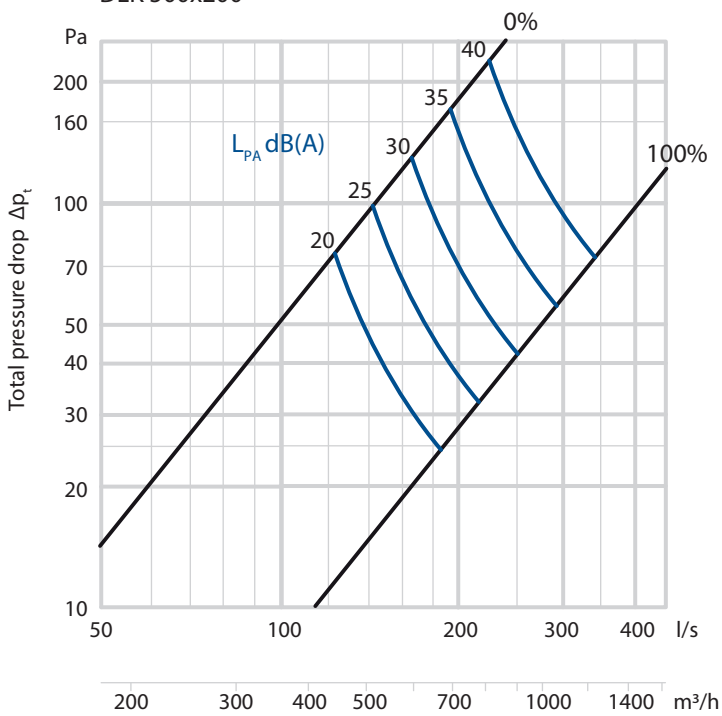
D.7.
DLK 500x150



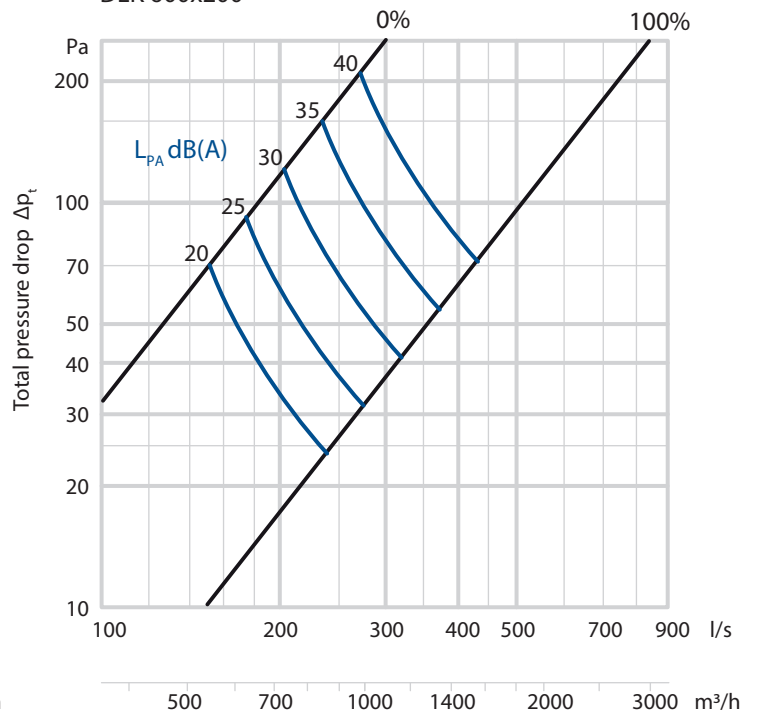
D.8.
DLK 600x150 ; DLK 400x200



D.9.
DLK 500x200



D.10.
DLK 600x200

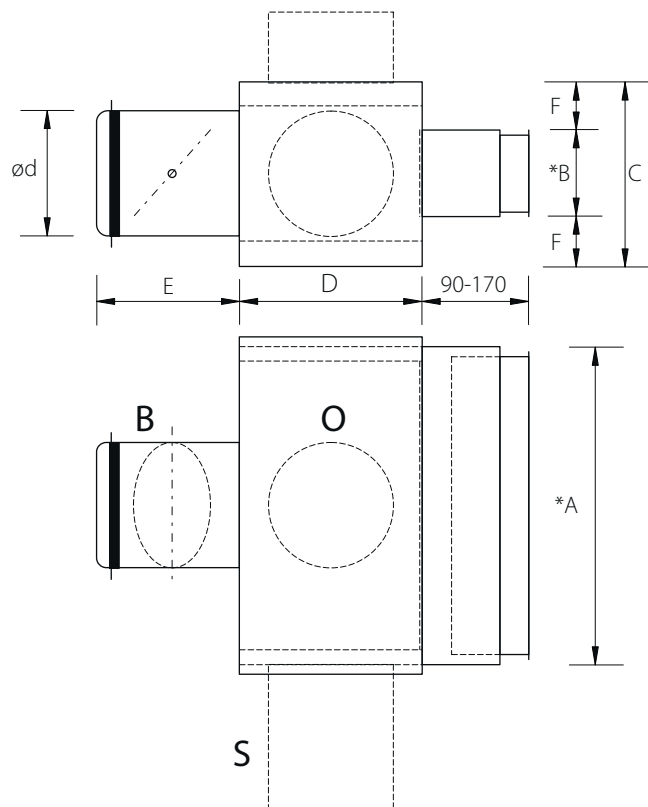


0% = Closed damper
100% = Opened damper

Dimensions

T.3.

Type AxB		∅d	C	E	F	C/3
200	100	123	190	154	45	63
300	100	158	230	184	65	76
400	100	158	230	184	65	76
500	100	198	270	214	85	90
600	100	198	270	214	85	90
300	150	198	270	214	60	90
400	150	248	320	274	85	106
500	150	248	320	274	85	106
600	150	248	320	274	85	106
400	200	248	320	274	60	106
500	200	313	360	274	80	120
600	200	313	360	274	80	120



Specification

Ordering code:	DLK	X	-XXX-XXX
Product acronym:	DLK		
Side of connection:			
- back side		B	
- short side		S	
- top		O	
Size:			200-100
			300-100
			400-100
			500-100
			600-100
			300-150
			400-150
			500-150
			600-150
			400-200
			500-200
			600-200
Example: DLKB-400-150			