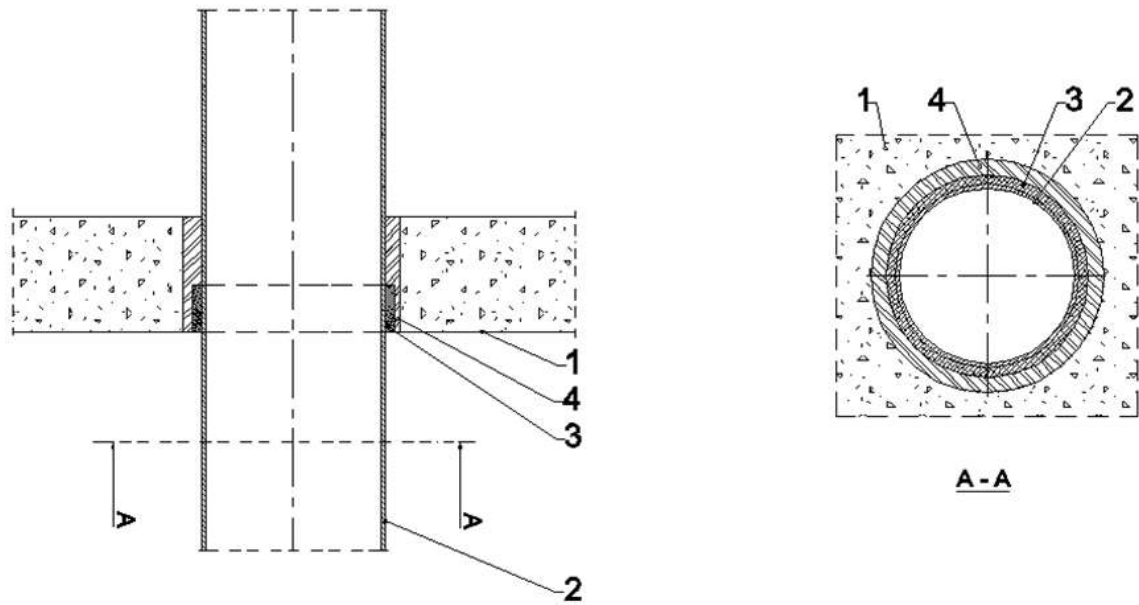


Plastic pipe penetration seal in rigid floor, made with use of PS-25 Wrap.



- 1 Rigid floor with thickness ≥ 150 mm and density ≥ 600 kg/m³
- 2 Plastic pipe
- 3 PS-25 Wrap placed on the bottom of the floor
- 4 Gap filler (cement or gypsum mortar); gap width ≤ 15 mm

PS Collar and PS-25 Wrap

**Construction details of penetration seals
made with use of PS-25 Wrap**
Plastic pipe penetration seal in rigid floor

Annex C29
of European
Technical Assessment
ETA-17/0676