

-  **DUCTS: ventilation & smoke evacuation**
-  **PROTECTION of SERVICES**
-  **PROTECTION of CARBON REINFORCEMENT**
-  **INSPECTION HATCHES**





Ventilation ducts

– **EN 1366-1**

Smoke evacuation ducts

– **EN 1366-8**



Fire rated protection of services & shafts (EN 1366-5)





FIRE RESISTANCE TESTS

EN 1363
General Requirements



EN 1364
Non-loadbearing
Elements

EN 1366
Service Installations

EN 1364-1
Walls

EN 1366-1
VENTILATION

EN 1366-8
SMOKE EVACUATION

EN 1366-5
ENCOFFREMENT

EN 1364-1
Inspect. Hatch.



CLASSIFICATION

EN 13501-3
VENT. DUCTS

EN 13501-4
SMOKE EVAC. SYST.

EN 13501-2
Résistance au feu
(excluding ventilation services)

EN 13501-2
Fire Resistance Tests
(excluding ventilation services)

EI 30-60 ve ho i↔o S

EI 30-60 S ve ho -
1500/+500Pa Multi

EI 30-60 ve ho i↔o

EI 60 i↔o

EI 90-120 ve ho i↔o S

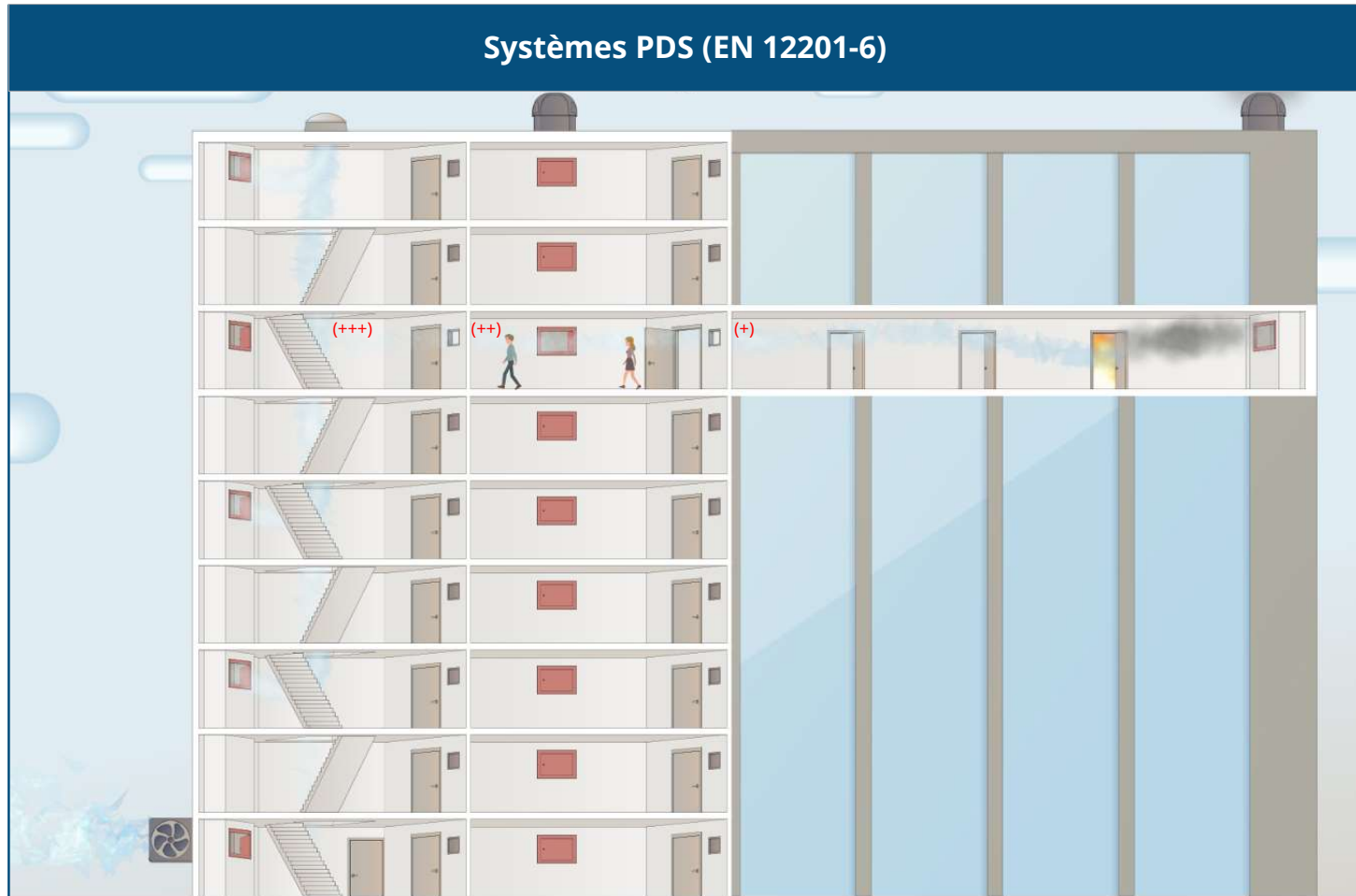
EI 90-120 S ve ho -
1500/+500Pa Multi

EI 90-120 ve ho i↔o

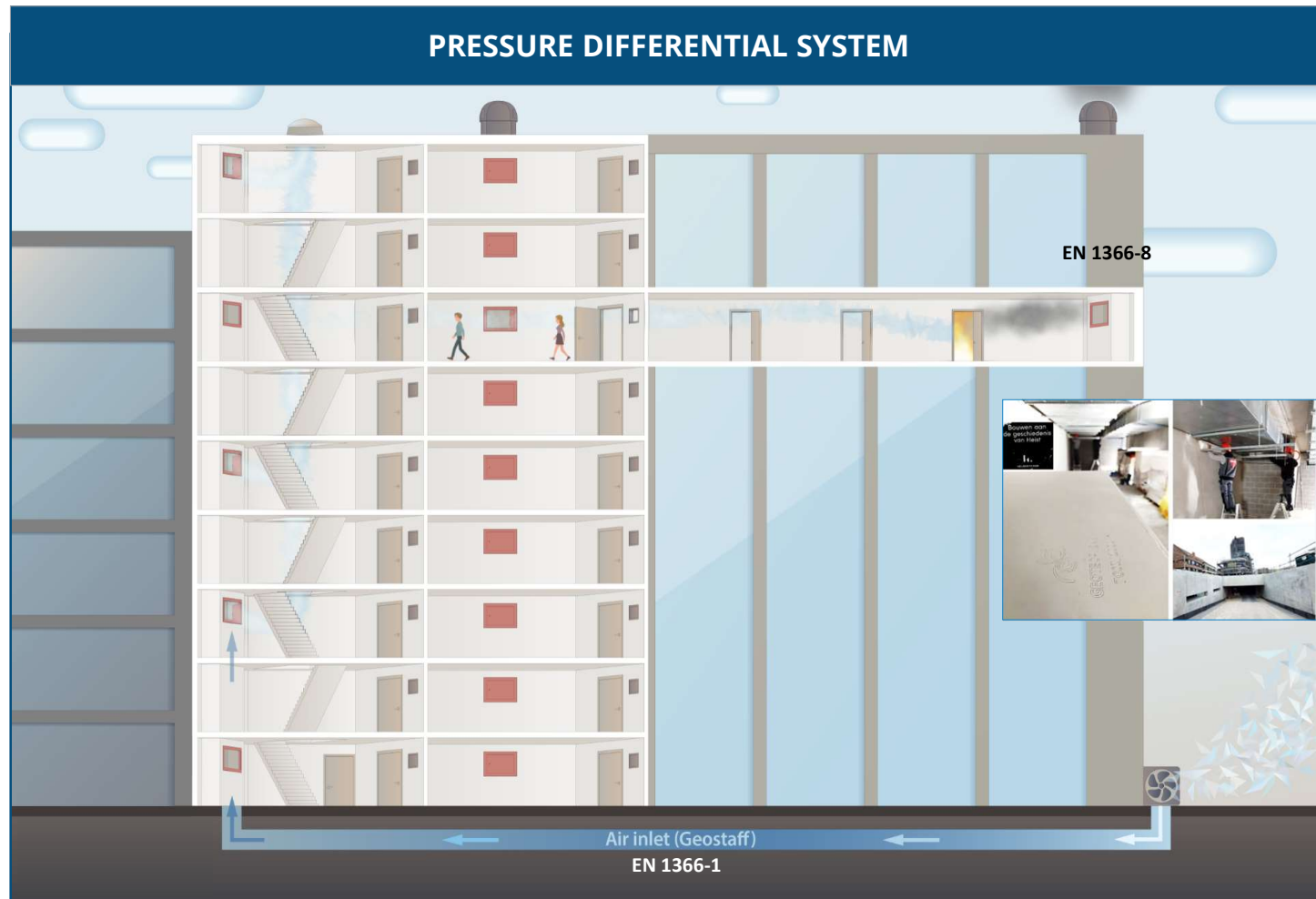
EI 120 i↔o



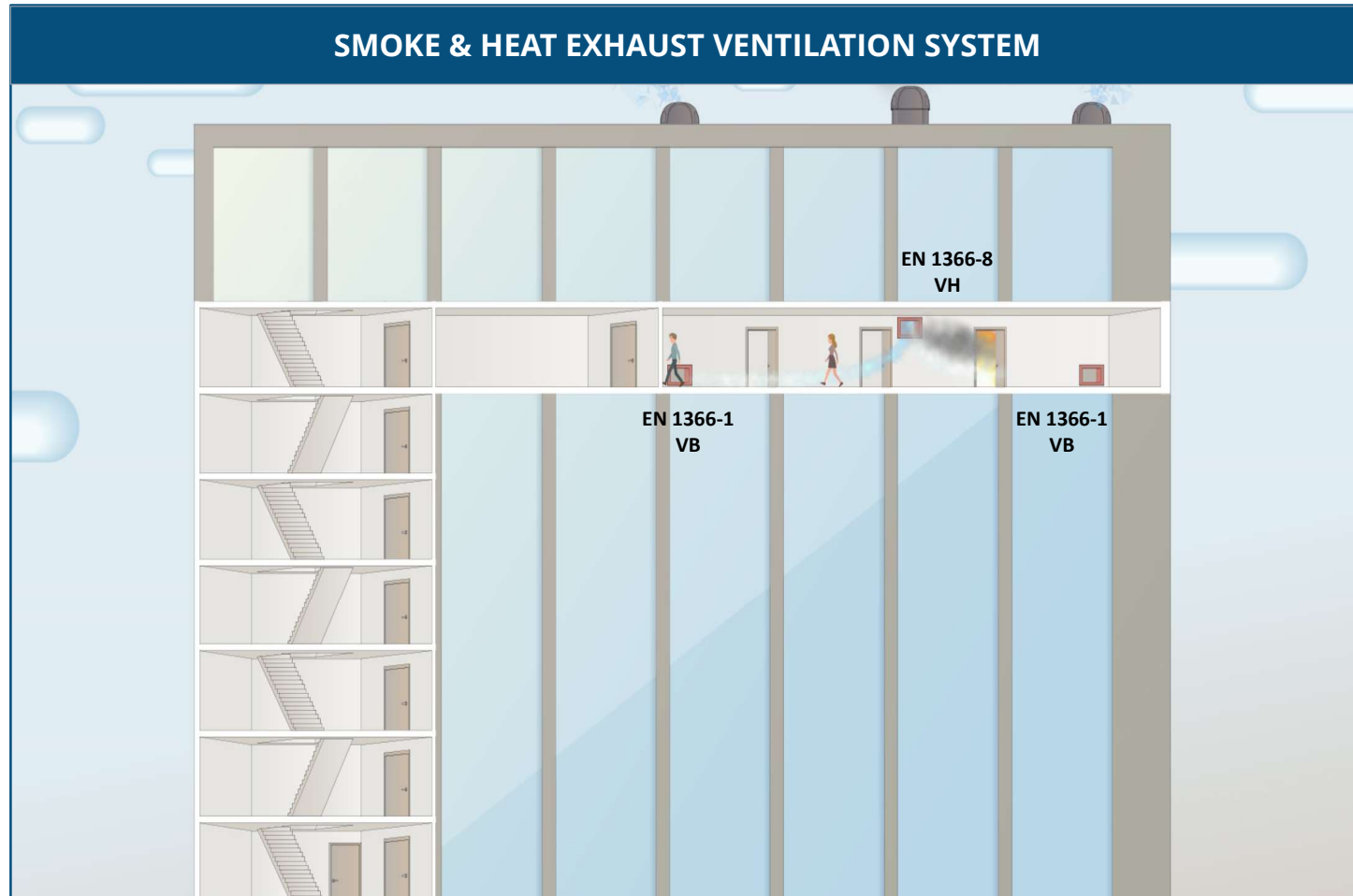
CONCEPT & NORMES



CONCEPT & NORMES



CONCEPT & NORMES





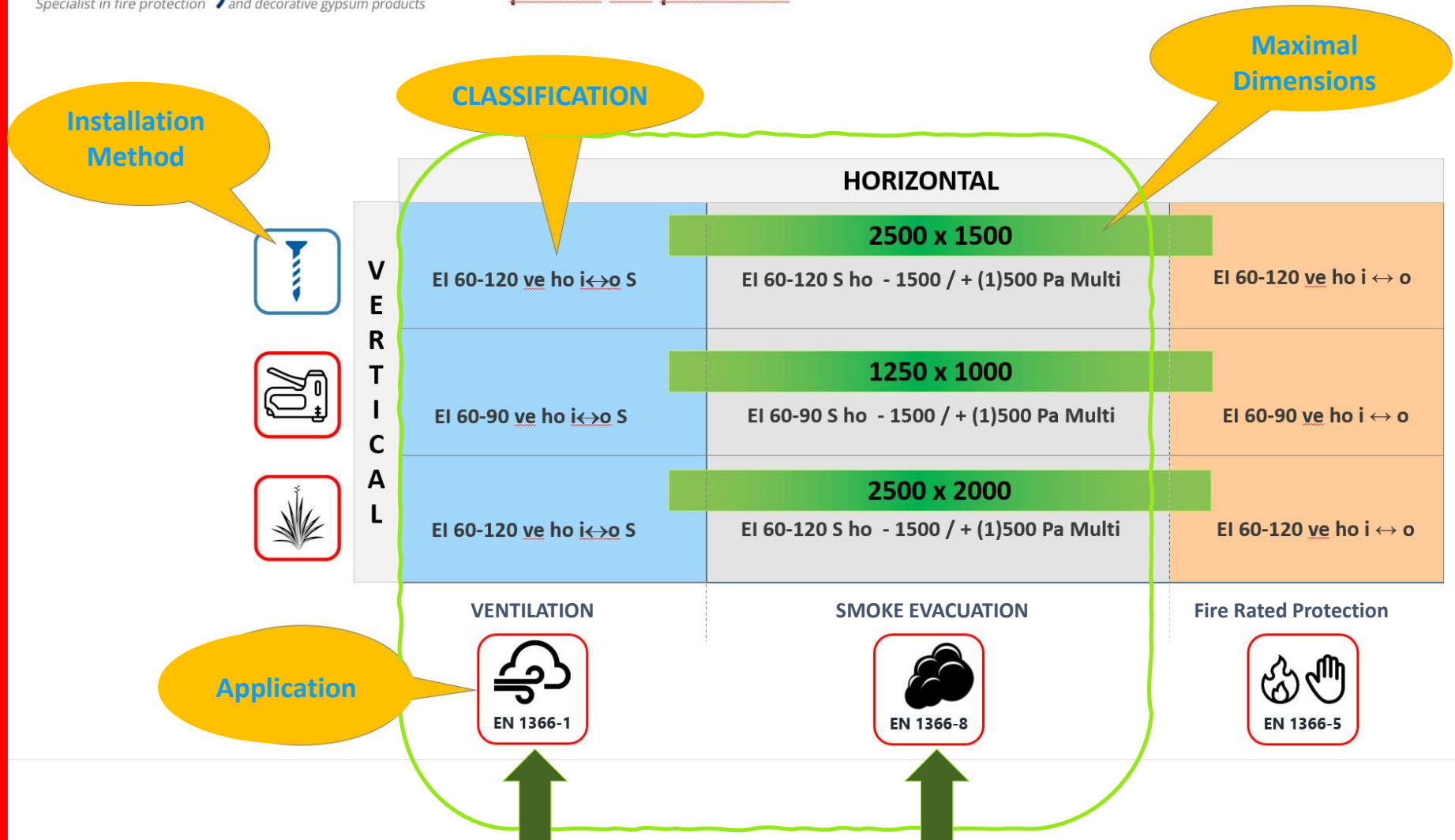
Smoke Control Damper
EN 1366-10 tested

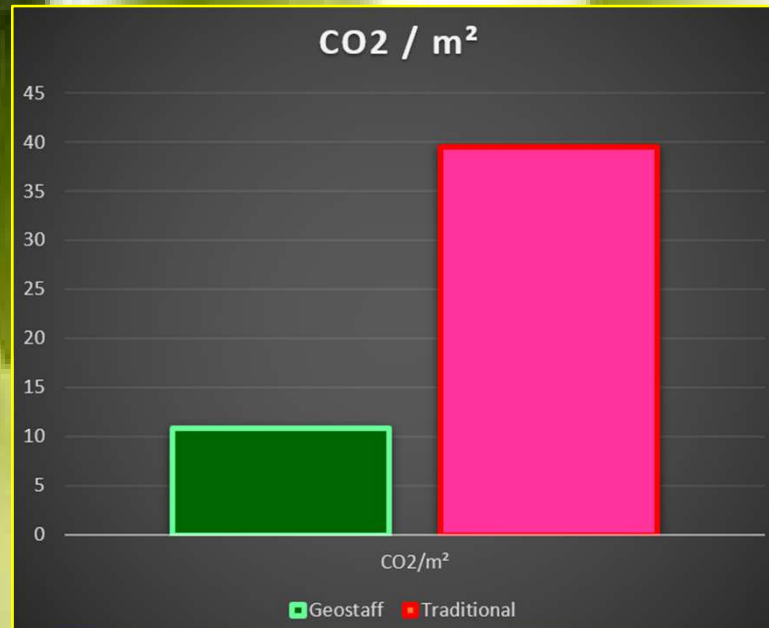


SMOKE SHAFT

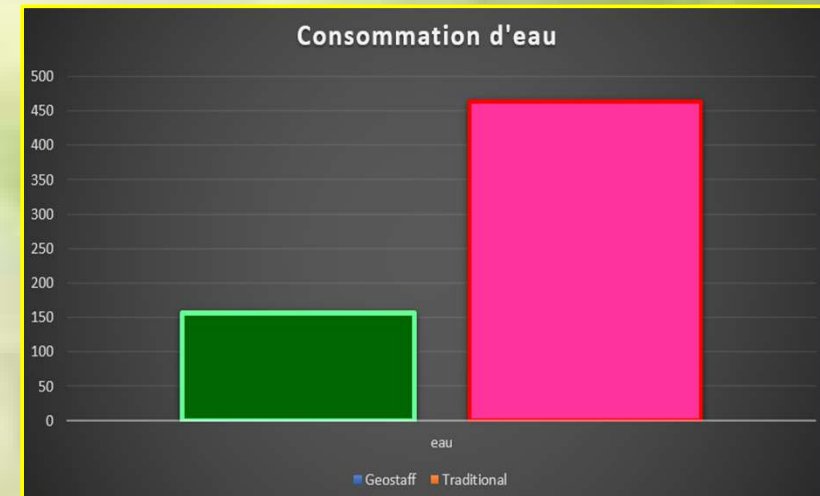
Smoke shaft is resistant to high temperatures, simultaneously inside + outside the duct. **EN 1366-8 tested**







GEO STAFF

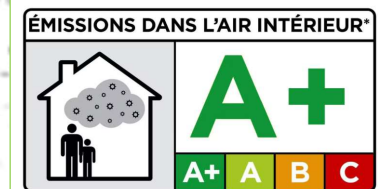




Ventilation & Smoke evacuation DUCTS

Quality solutions with recyclable products
without silica

Let's respect the installers health.
Opt for recyclable solutions and consider the total
life cycle of projects.



GEO STAFF ACADEMY





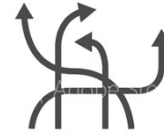
USPs



ONE STOP SHOP



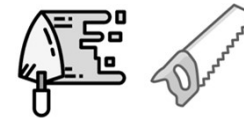
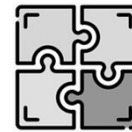
TAILORED



FLEXIBLE



**CERTIFIED
SOLUTIONS**




GEOSTAFF SYSTEM






GEOFLAM C-LIGHT prefab gutters Protect your vital installations against fire



Protection of services 
EN 1366-5: EI120 i↔o

Ventilation 
EN 1366-1: EI120S

Smoke evacuation 
EN 1366-8: EI120S 1500Pa Multi



GEO PRO

Online Calculation Tool



Easily calculate the full Bill of Material for your solution.

Fast · Simple · Complete

GEO PRO

Contact us for more information

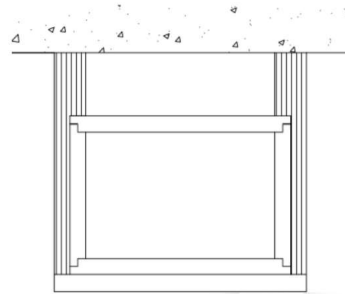




GEO PRO - Online Calculation Tool

INPUT TABLE										
Reference	N°	Fire resistance	Type	Direction	Width (mm)	Height / Depth (mm)	Plenum or Floor to floor height	Surface (m²)	Length (m)	Changes of direction
Geostaff Academy	1	EI 120 S	Smoke extraction	H	600	500	300 mm	26,00	10,00	0
Total surface :								26,00		

Duct n°1
 Geostaff Academy
 EI 120 S
 GEOTEC®S Ep 45mm
 Smoke extraction
 Horizontal
 600mm x 500mm int.
 700mm x 600mm ext.
 Plenum 300mm
 Length 10,00m
 Number of suspension cradles : 11
 Surface : 26,00m²



Horizontal Boards

- 20 Boards GEOTEC®S de 700mm

Vertical Boards

- 20 Boards GEOTEC®S de 550mm

- 10 U-plaster (PFU0011) GEOFLAM®A in 1 m
- 30 ½ Shells GEOFLAM®A in 1 m
- 22 Brass anchors Ø 8
- 22 Zinc-plated nuts Ø 8
- 22 Zinc-plated washers Ø 8
- 22 Threaded rods Ø 8 in 1 m
- 4 U Channel Steel 21x41x21 in 3 m
- 360 Wood screws Ø 5 mm - L = 90
- 2,60 bags of GEOCOL®

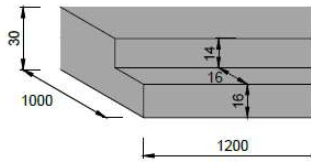


One Stop Shop

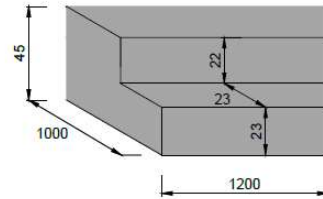


GEOTEC SX

GEOTEC®SX30

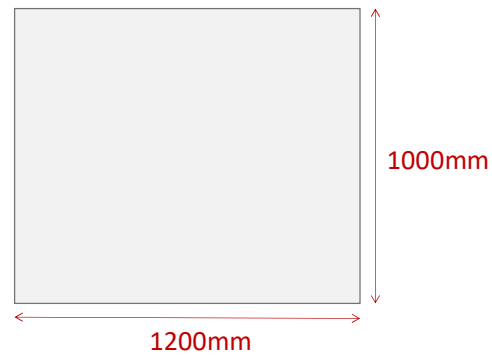


GEOTEC®SX45



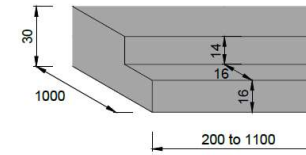
Standard board

1 dimension
1200x1000mm

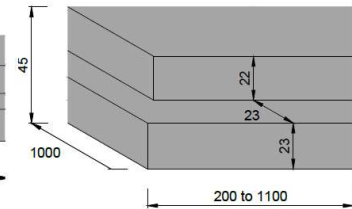


GEOTEC S

GEOTEC®S30

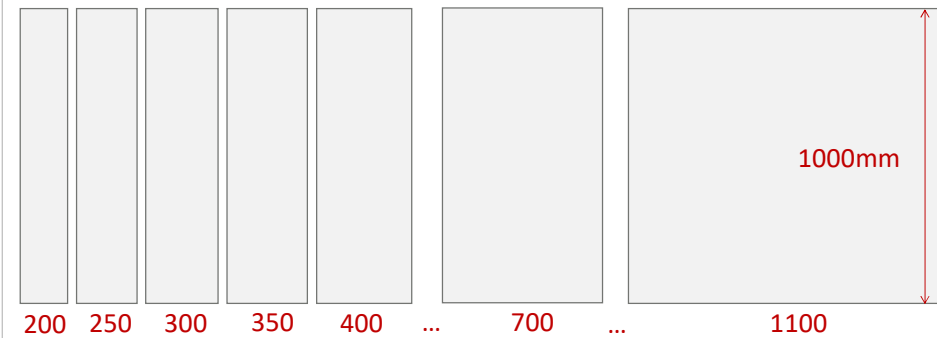


GEOTEC®S45



Tailored boards

Multiple dimensions/widths



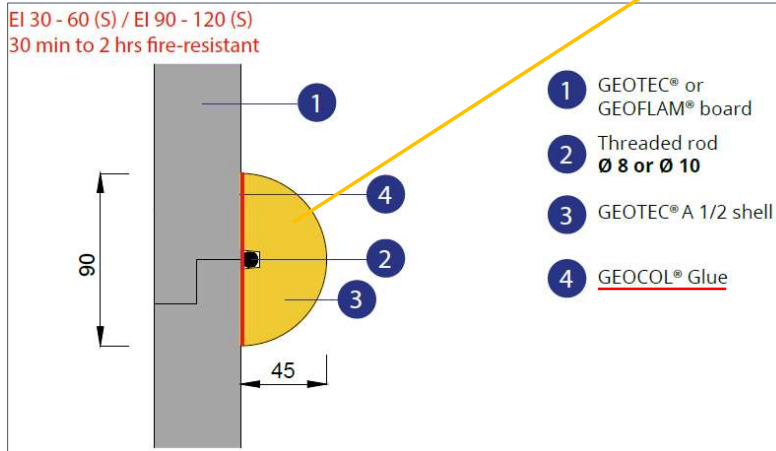
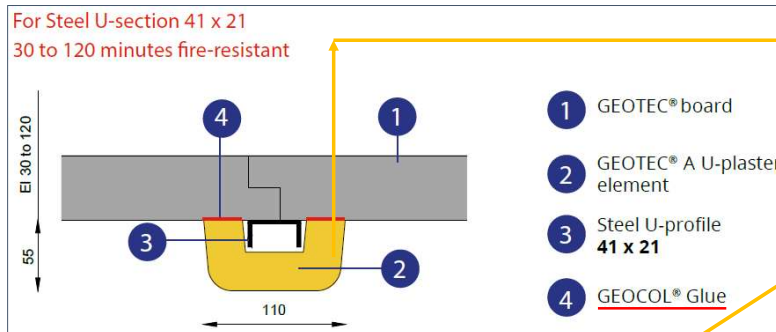
What do you need?
Prepare well & speed up your installation



Fixation U-Plâtre et ½ Coquille

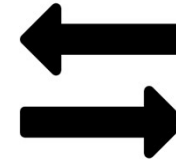


Pas de vis, juste **GEOCOL**



POUSSEZ

①



REMUEZ

②



TAPEZ

③

Fixez les U-plâtres et les ½ Coquilles à l'aide de la **GEOCOL** pour la protection des berceaux.

Une viscosité augmentée est recommandé par rapport à la viscosité du collage des plaques.

Fixez les accessoires CF de la manière suivante:

- **POUSSEZ:** Poussez l'accessoire contre le conduit
- **REMUEZ:** Aide à la diffusion et à l'intensité de contact de la colle avec la plaque
- **TAPPEZ:** Pour une bonne fixation à la plaque

Enlever le surplus de colle, que vous pouvez réutiliser.
Utilisez un chiffon humide pour une finition parfaite.





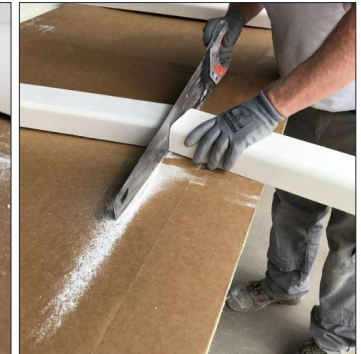
Préparation facile de colle type Geocol

Preparing glue 'Geocol'



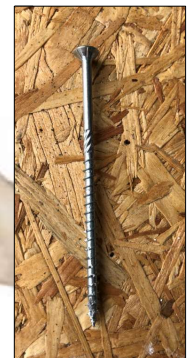
Coupe aisée

Easy manipulation



Quincaillerie

Metal accessories





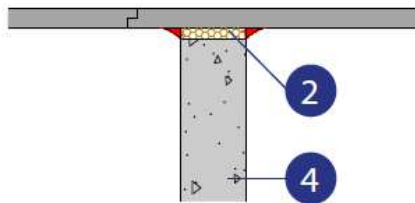
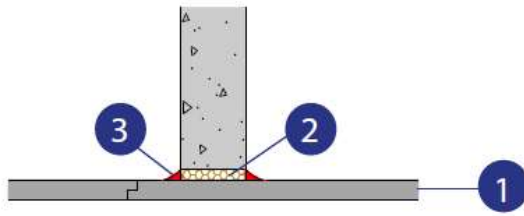
Protection of the suspension system



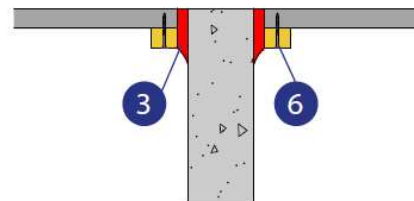
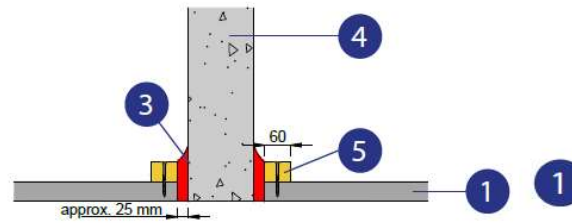
WALL CROSSINGS



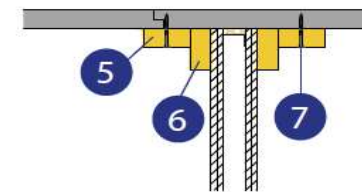
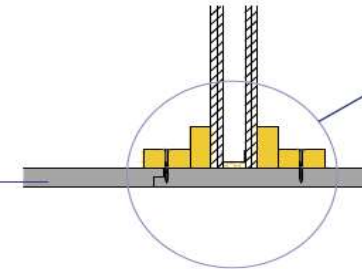
Side view



Side view



Side view



(CLT Wood and Solid) Floor



Colle + vis
ou
Palochnage

Entre 200 et 500 mm

≤ 25 mm

INSTALLATION DU CONDUIT VERTICAL TRAVERSANT UN PLANCHER BOIS

- Installation du conduit vertical en plaques GEOTECH® S coupe-feu 1 à 2 heures conformément au procès-verbal de référence.
- Reprise de charge identique à celle du procès-verbal des conduits verticaux GEOTECH®.
- Traversée du plancher bois CLT:**
Calfoutement réalisé au moyen de laine de roche (26 kg/m³ minimum)
Encollage et vissage d'un talon périphérique au conduit en sous face du plancher bois.

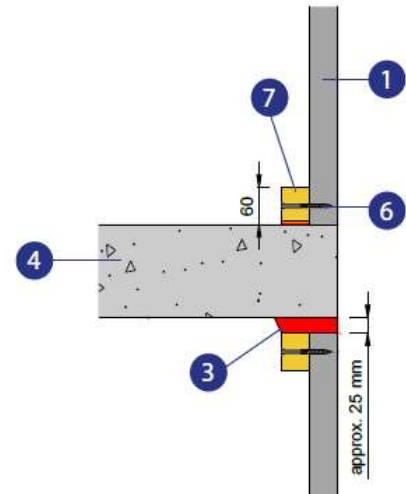
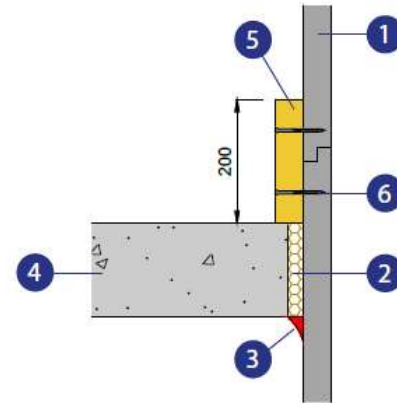
Talon GEOTECH® A

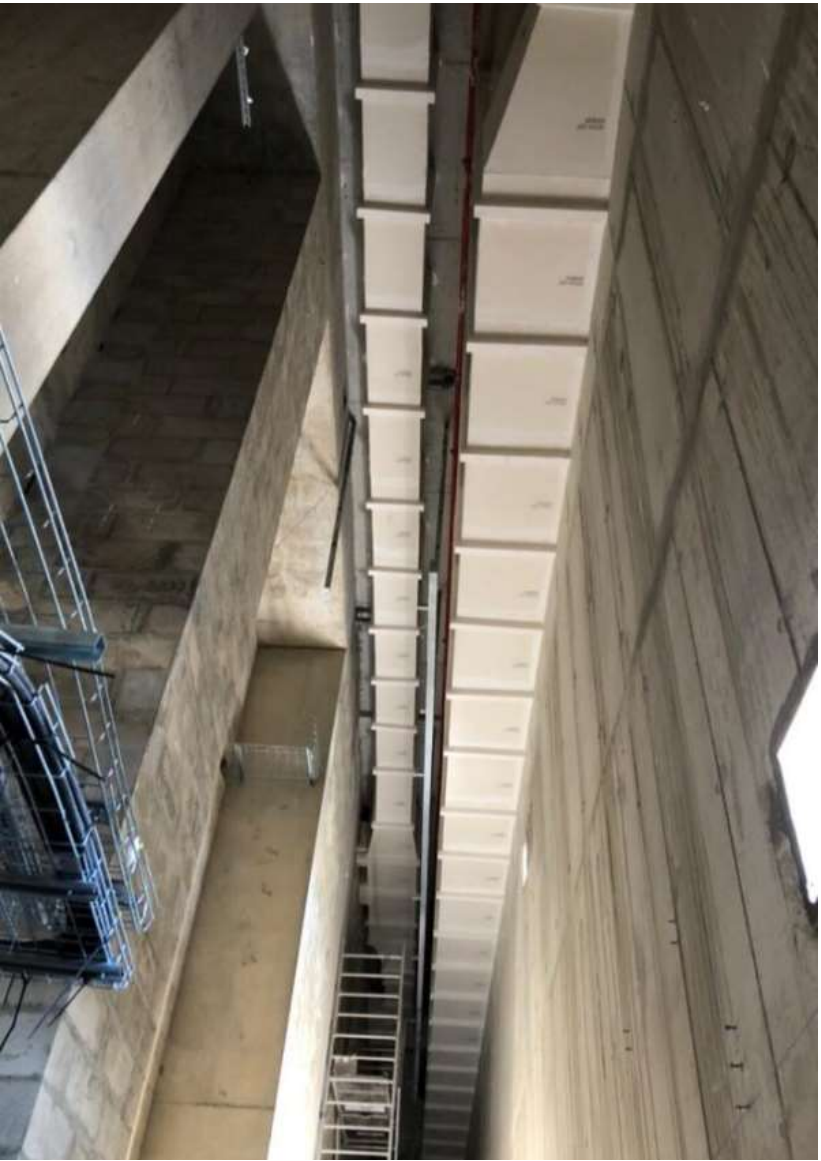
200

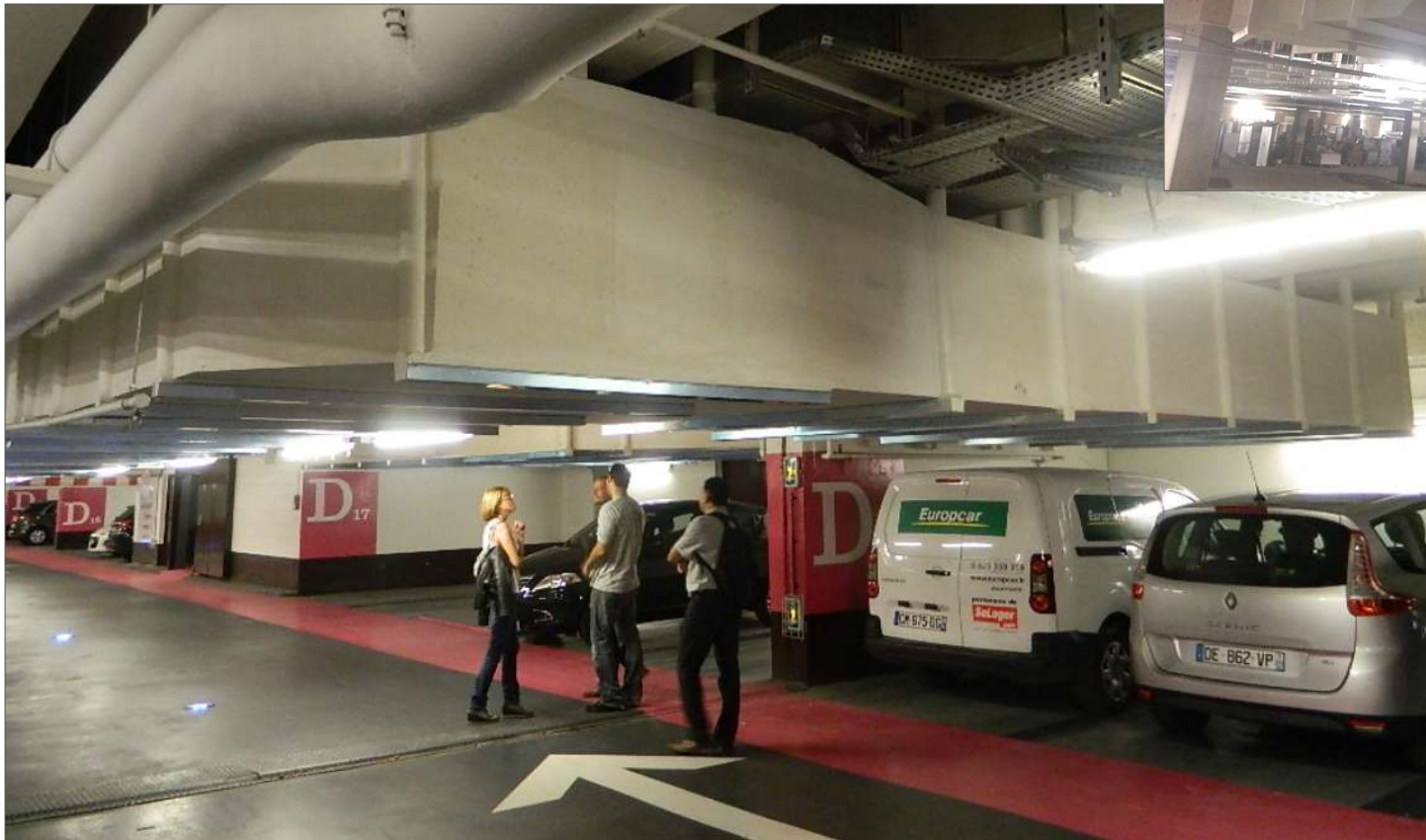
Calfoutement

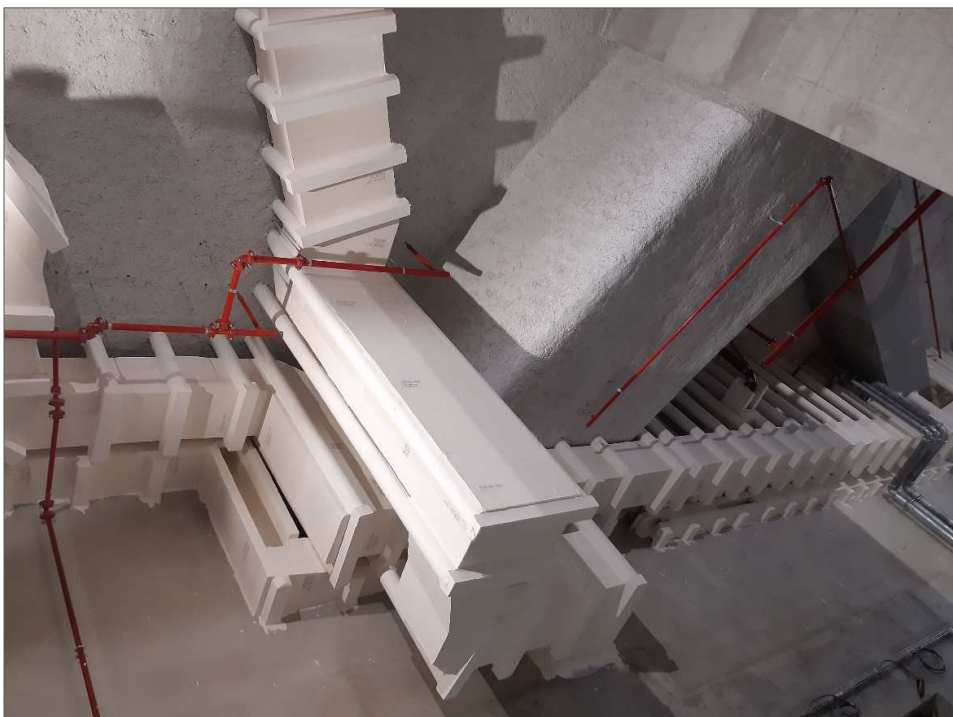
100

1/2 Talon GEOTECH® A







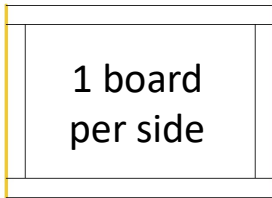




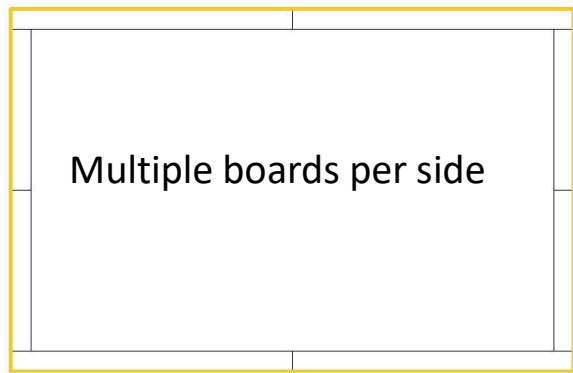
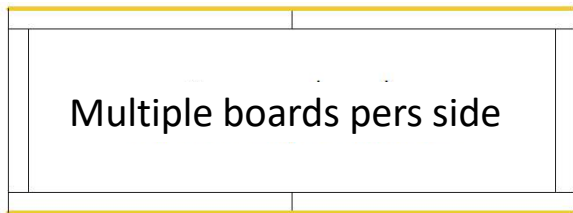




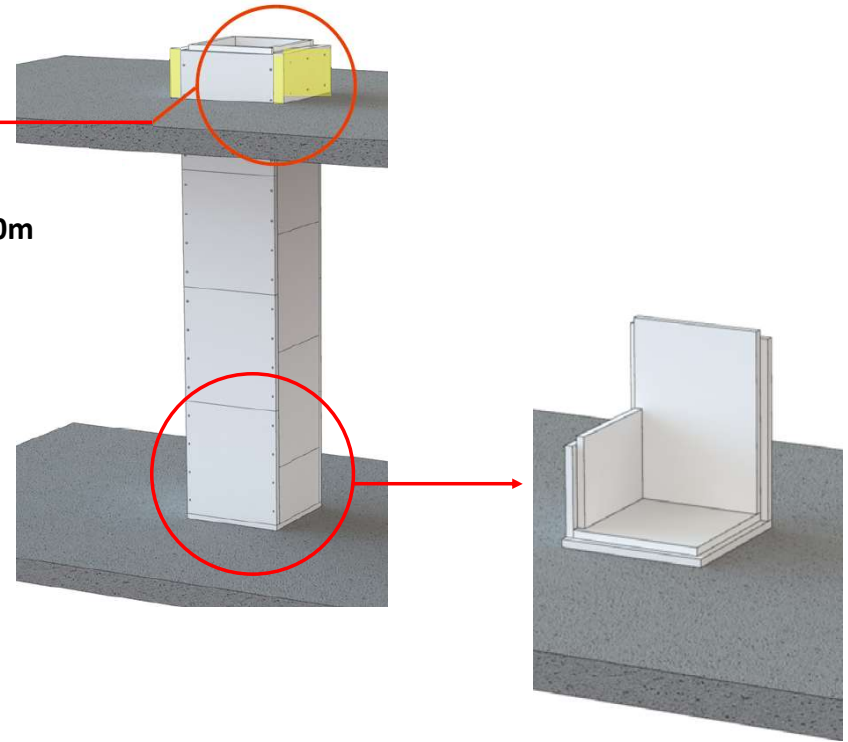
VERTICAL System



2 reinforcement collars → every 7m
3 ou 4 reinforcement collars → every 10m



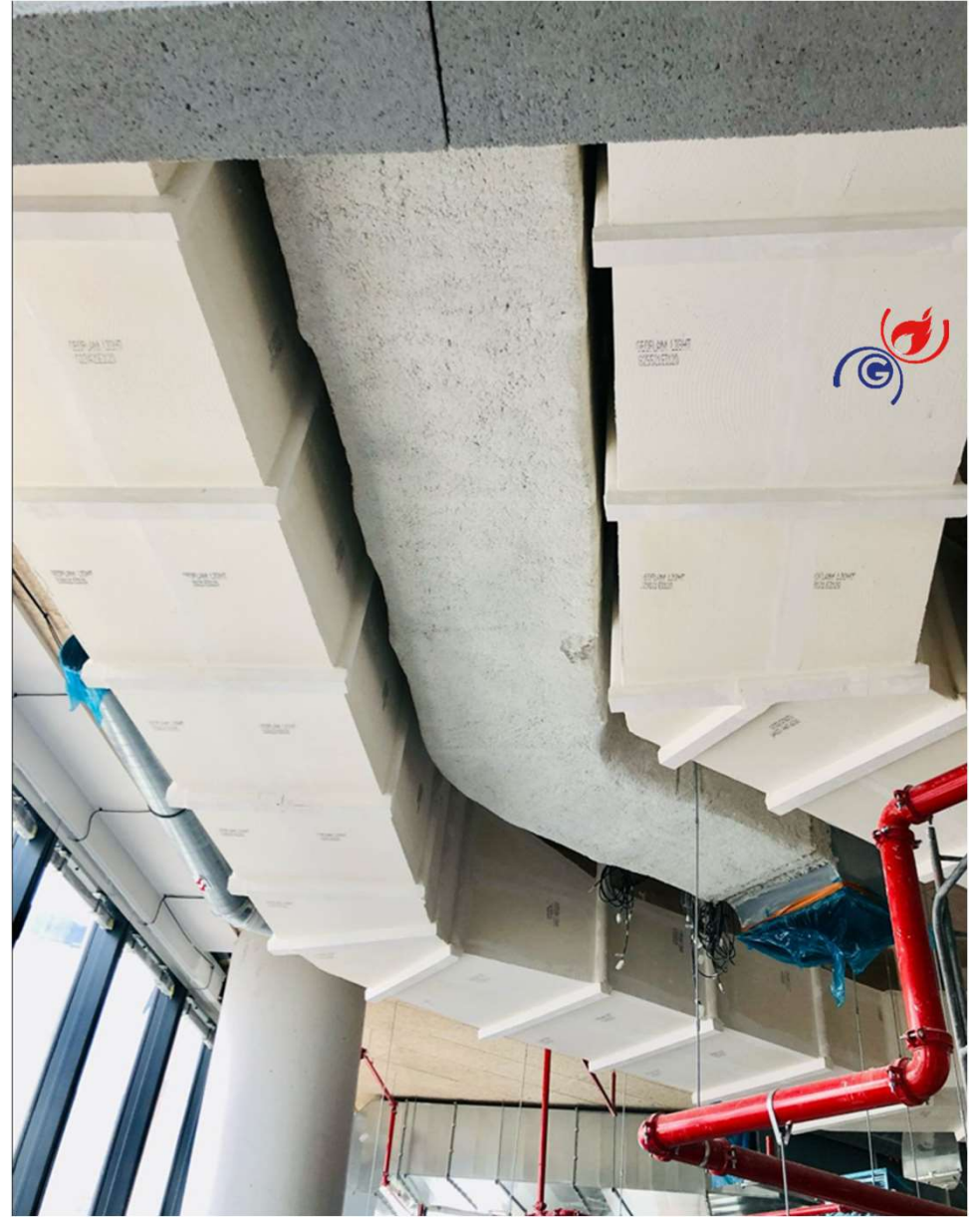
Vertical System



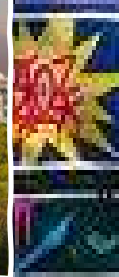
VERTICAL System











Let's work on your project together!



WALL OF FAME

