

square perforated ceiling diffusers



DESCRIPTION

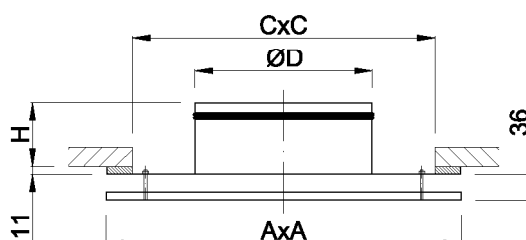
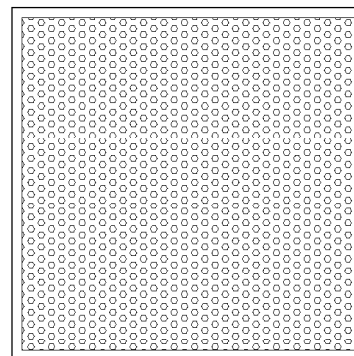
KPNS are square perforated diffusers designed for low- and medium-pressure installations. They can be used with constant and variable airflow. The air can be supplied at the temperature by 12°C than the temperature in the ventilated room. This makes them appropriate for cooling facilities with special microclimate requirements.

They can supply or exhaust air. It is recommended to install KPNS into the ceiling.

Due to small size and discrete looks, KPNS diffusers can be easily incorporated into modern ceiling systems.

FEATURES

- short airflow stream
- can be installed with an expansion can SR/KPNS
- available in standard RAL 9010 colour
- upon customer's request, can be made in any colour from RAL palette

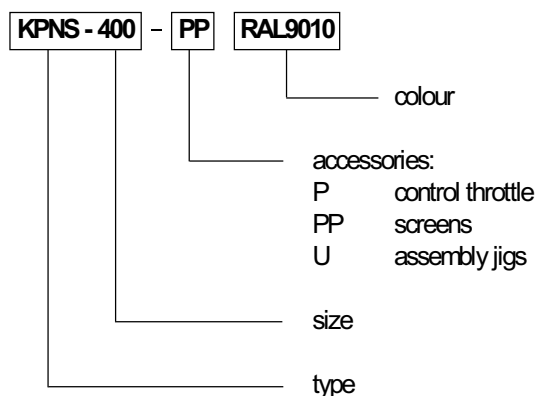


STANDARD SIZES

	125	160	200	250	315	400
ØD [mm]	123	158	198	248	313	398
A [mm]	235	295	395	495	595	595
C [mm]	200	260	360	460	560	560
H [mm]	138	148	158	158	158	158

C - installation hole size

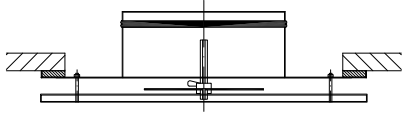
ORDER REFERENCE



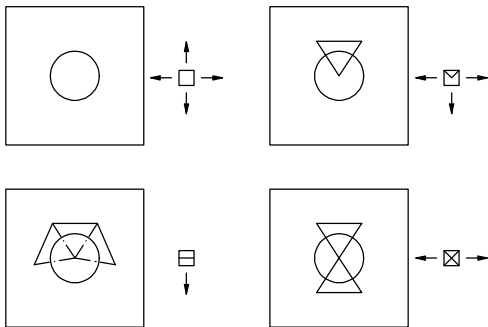
square perforated ceiling diffusers

ACCESSORIES

P - Control throttle



PP - Screens



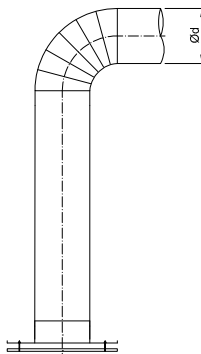
U - Assembly jigs



INSTALLATION

KPNS diffusers can be installed directly in the round ventilation duct or expansion box SR/KPNS. In both cases rivets or screws should be used for installation.

If the diffuser is installed directly to the underslung ceiling, prepare an installation hole of a size of $C \times C$ and use factory assembly jigs, type U. Seal joints between the ceiling and the diffuser.

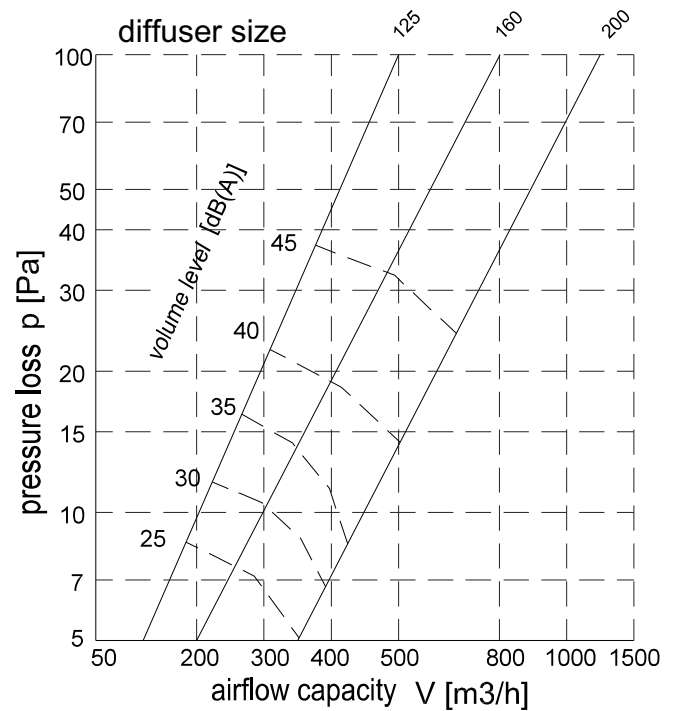


FEATURES

The figure shows airflow capacity V (m^3/h), pressure loss p (Pa), airflow scope L (m) for end speed of 0.25 m/s, and volume level [dB(A)].

Values of the airflow scope L and air pressure loss relate to 4-duct supply. In other cases please see figures in the table below.

Airflow shape	Scope L	Pressure loss p
3-duct	1.18	1.49
2-duct	1.61	2.53
1-duct	2.27	3.68



Diffusers KPNS

