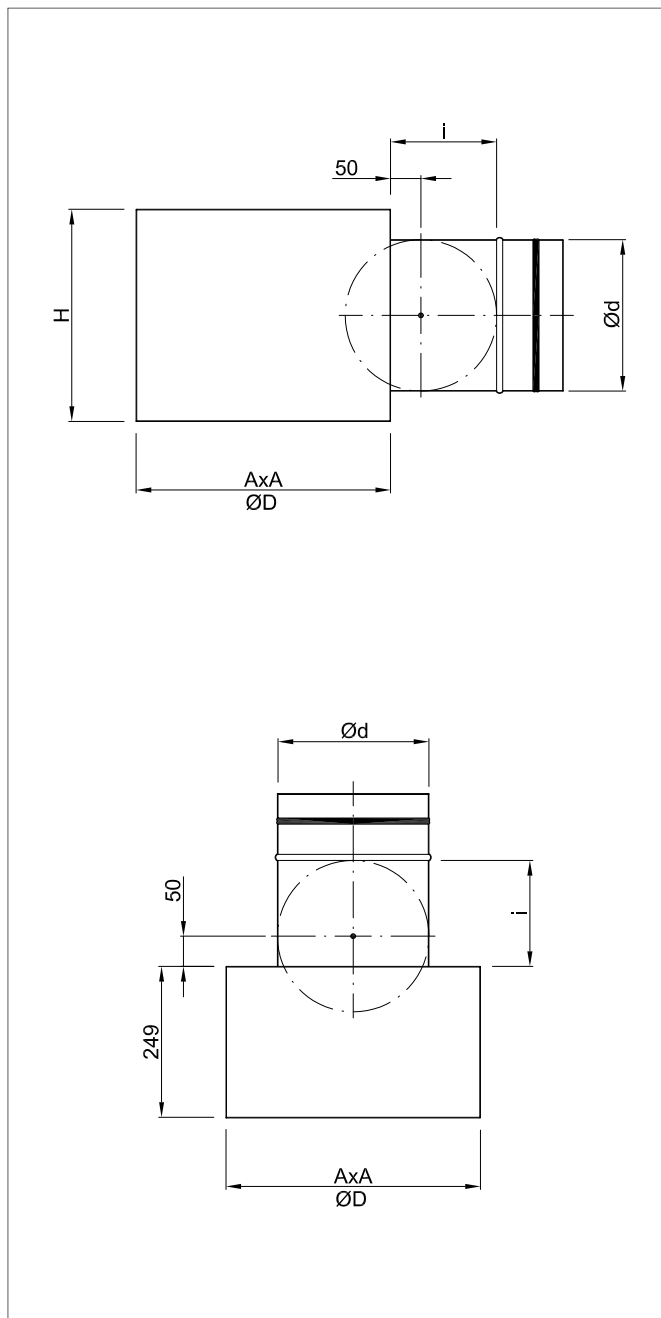


# SR/ANW, SR/AWW



## expansion boxes for diffusers ANW i AWW



### DESCRIPTION

SR/ANW and SR/AWW are expansion boxes for diffusers ANW and AWW. They stabilize the airflow and ensure uniform air supply to the diffuser. Expansion boxes connect diffusers with ventilation installation. They are made of zinc-coated sheet, joint by non-welded Click-Clock connection.

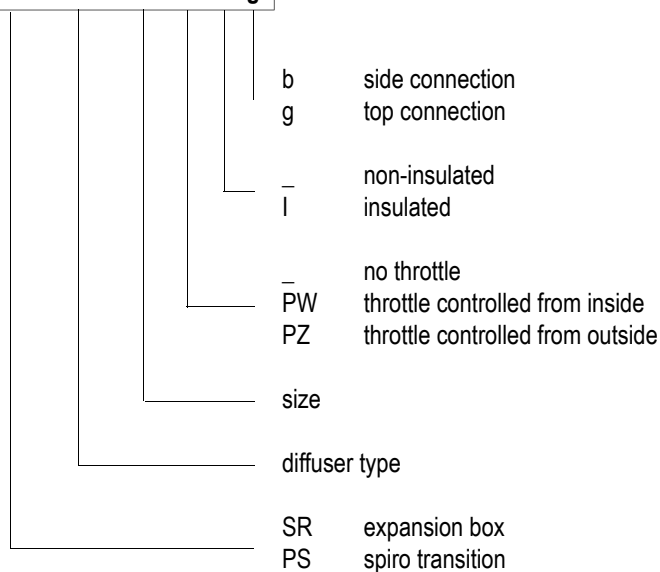
Expansion boxes can be connected to the ventilation installation through the side or top.

Boxes can be thermally and acoustically insulated from the inside by K-Flex rubber mat.

Upon customer's request we can make other types of expansion boxes accordingly to provided drawings.

### ORDER REFERENCE

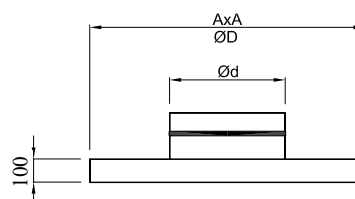
SR/ANW-K-200-PZ-l-g



### STANDARD SIZES

size	300	400	500	600	625	825
A [mm]	293	393	493	593	620	820
H [mm]	260	300	300	350	350	400
Ød [mm]	158	198	198	248	313	398
ØD [mm]	295	395	495	595	620	820
i [mm]	130	150	150	175	175	200

### PS - Spiro transition



### INSTALLATION

Expansion boxes SR/ANW and SR/AWW are designed for installation between the ceiling and underslung ceiling. Prepare an installation hole of a size of  $\varnothing D$  or  $A \times A$ . The box can be mounted onto the ceiling by appropriate hangers (bars, pins...) and installation slings. If installing in the full underslung ceiling, the box should be mounted so that edges stick out by approx. 12 mm from the ceiling panel.

Upon customer's request, boxes can be equipped with

1. factory slings
2. a crossbar that allows for installation of the front panel with one central screw

