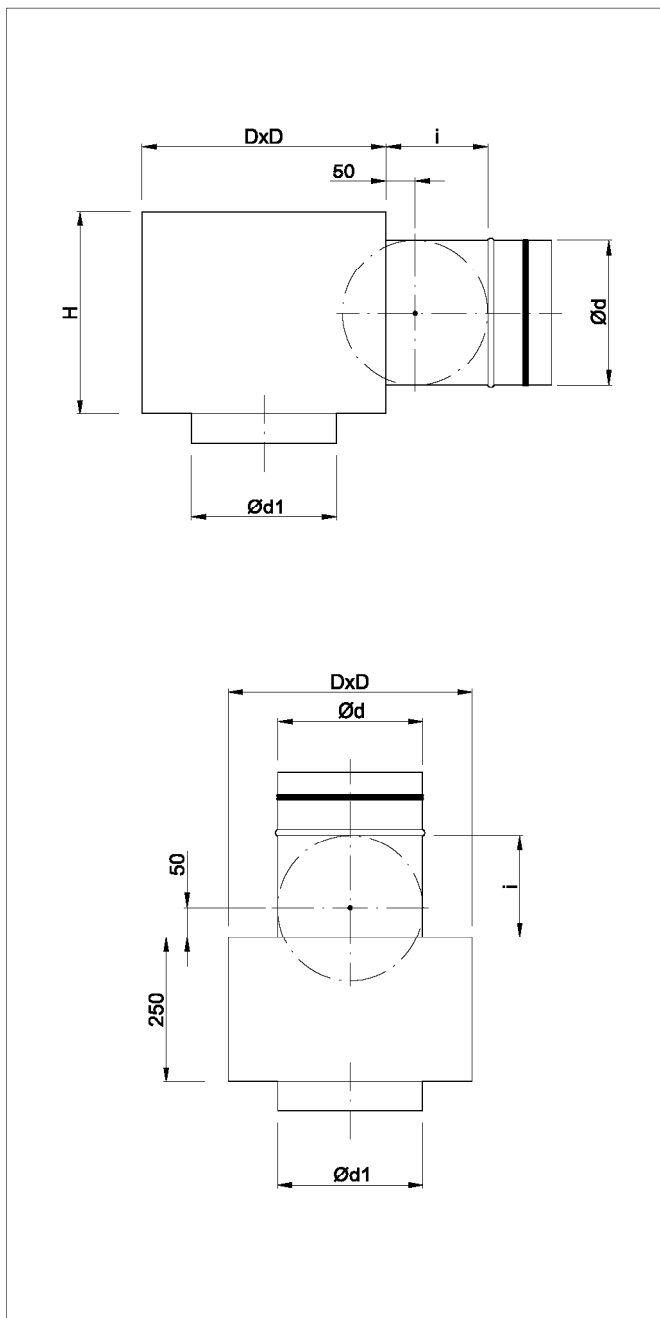


expansion boxes for diffusers KPNS/CP1



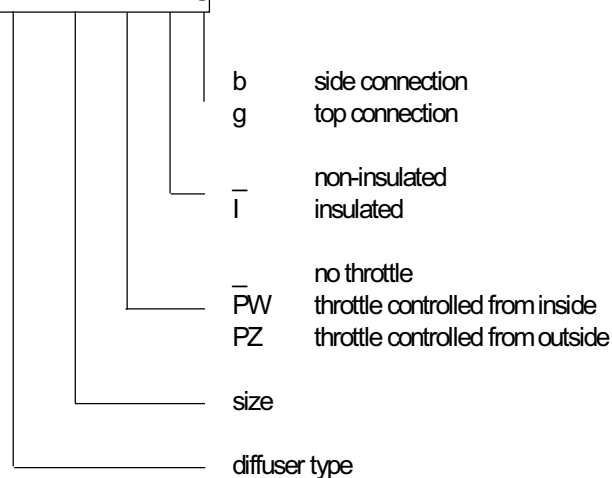
Expansion boxes can be connected to the ventilation installation through the side or top.

Boxes can be thermally and acoustically insulated from the inside by K-Flex rubber mat.

Upon customer's request we can make other types of expansion boxes accordingly to provided drawings.

ORDER REFERENCE

SR/KPNS/CP1-200-PZ-I-g



STANDARD SIZES

Size	125	160	200	250	315	400
D [mm]	225	260	300	350	420	500
H [mm]	225	260	300	350	420	500
Ød [mm]	98	123	158	198	248	313
Ød1 [mm]	125	160	200	250	315	400
i [mm]	115	130	150	175	200	250

DESCRIPTION

SR/KPNS/CP1 are expansion boxes for diffusers KPNS/CP1. They stabilize the airflow and ensure uniform air supply to the diffuser. Expansion boxes connect air grates with ventilation installation. They are made of zinc-coated sheet, joint by non-welded Click-Clock connection.

INSTALLATION

Expansion boxes SR/KPNS/CP1 are designed for installation into the underslung ceilings or free hanging from the ceiling. If installing in between the ceiling and underslung ceiling, a hole should be left of a size of CxC for the chosen diffuser. The box can be mounted on the ceiling by appropriate hangers (bars, pins...) and installation slings. KPNS/CP1 diffusers should be fixed to the underslung ceiling with factory assembly jigs, type U.

Upon customer's request, boxes can be equipped with factory slings.

INSTALLATION IN THE ROOF

