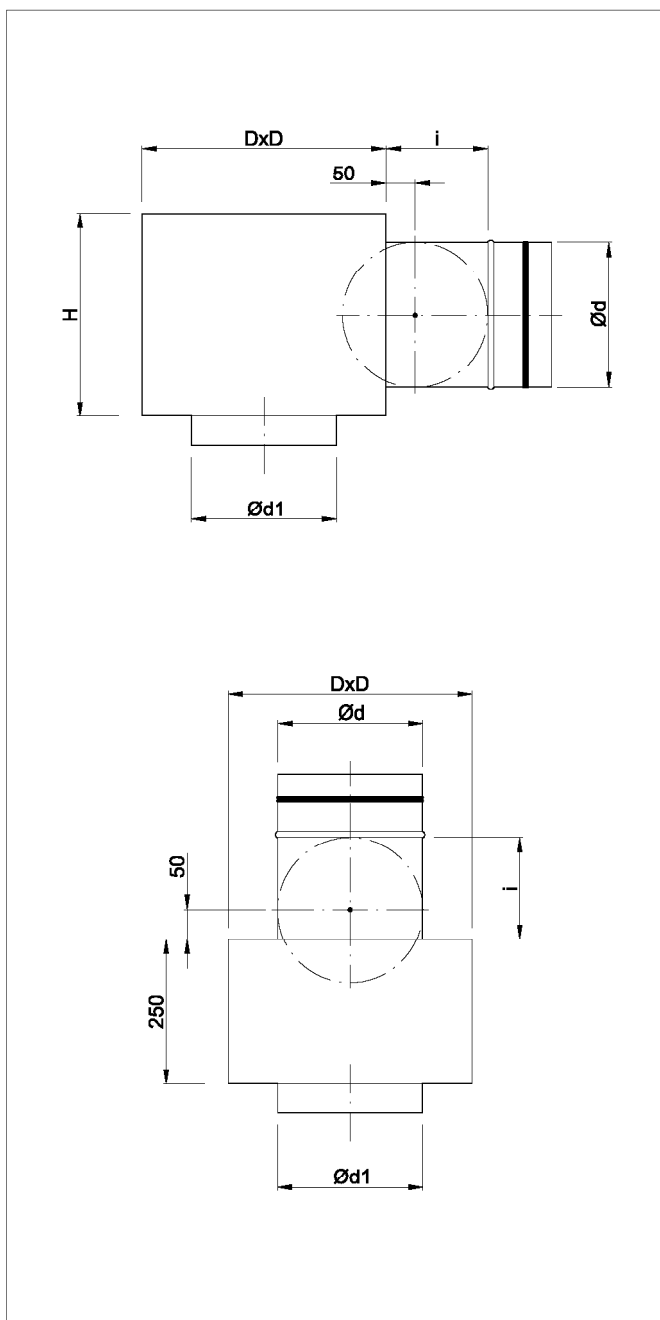


## expansion boxes for diffusers KPNS/CP2



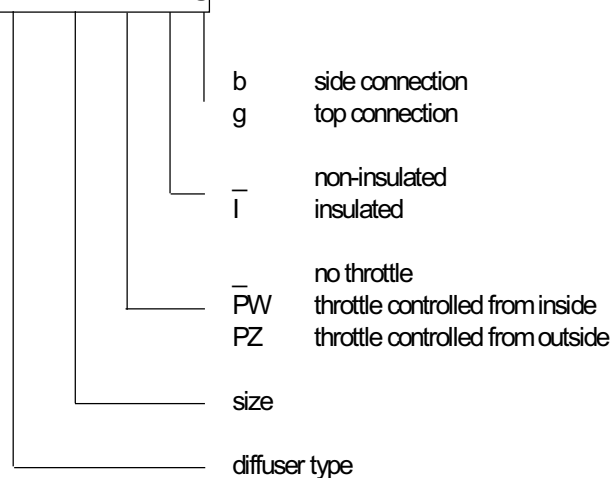
Expansion boxes can be connected to the ventilation installation through the side or top.

Boxes can be thermally and acoustically insulated from the inside by K-Flex rubber mat.

Upon customer's request we can make other types of expansion boxes accordingly to provided drawings.

### ORDER REFERENCE

SR/KPNS/CP2-200-PZ - I - g



### STANDARD SIZES

Size	125	160	200	250	315	400
D [mm]	225	260	300	350	420	500
H [mm]	225	260	300	350	420	500
Ød [mm]	98	123	158	198	248	313
Ød1 [mm]	125	160	200	250	315	400
i [mm]	115	130	150	175	200	250

### DESCRIPTION

SR/KPNS/CP2 are expansion boxes for diffusers KPNS/CP2. They stabilize the airflow and ensure uniform air supply to the diffuser. Expansion boxes connect air grates with ventilation installation. They are made of zinc-coated sheet, joint by non-welded Click-Clock connection.

### INSTALLATION

Expansion boxes SR/KPNS/CP2 are designed for installation into the underslung ceilings or free hanging from the ceiling. If installing in between the ceiling and underslung ceiling, a hole should be left of a size of CxC for the chosen diffuser. The box can be mounted on the ceiling by appropriate hangers (bars, pins...) and installation slings. KPNS diffusers should be fixed to the underslung ceiling with factory assembly jigs, type U.

Upon customer's request, boxes can be equipped with factory slings.

### INSTALLATION IN THE ROOF

